

Revolutionary Mapping Projector

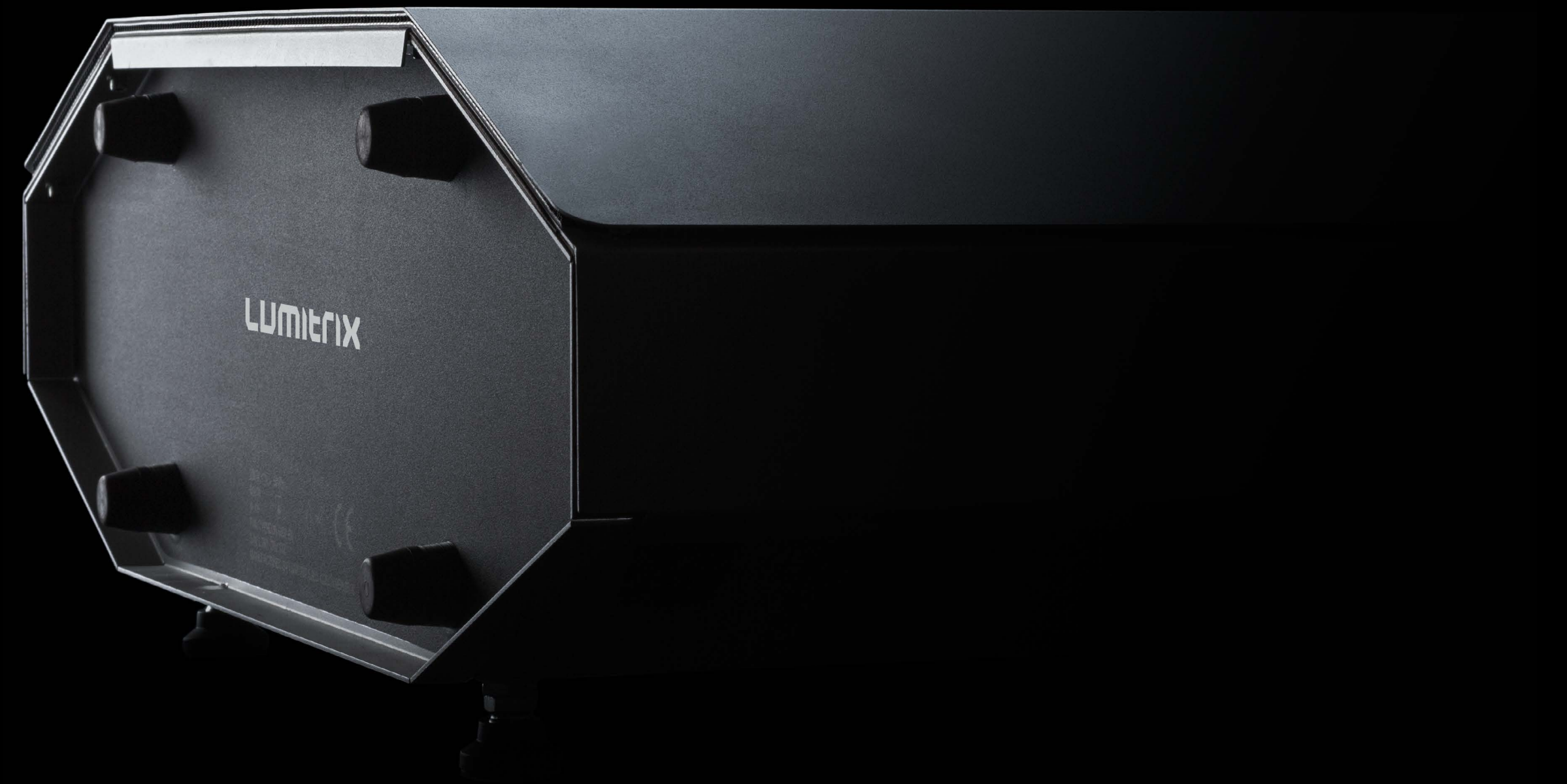


T2
SERIES



From time to time,
an innovative product doesn't fit in any
existing class because it is a category of its own.

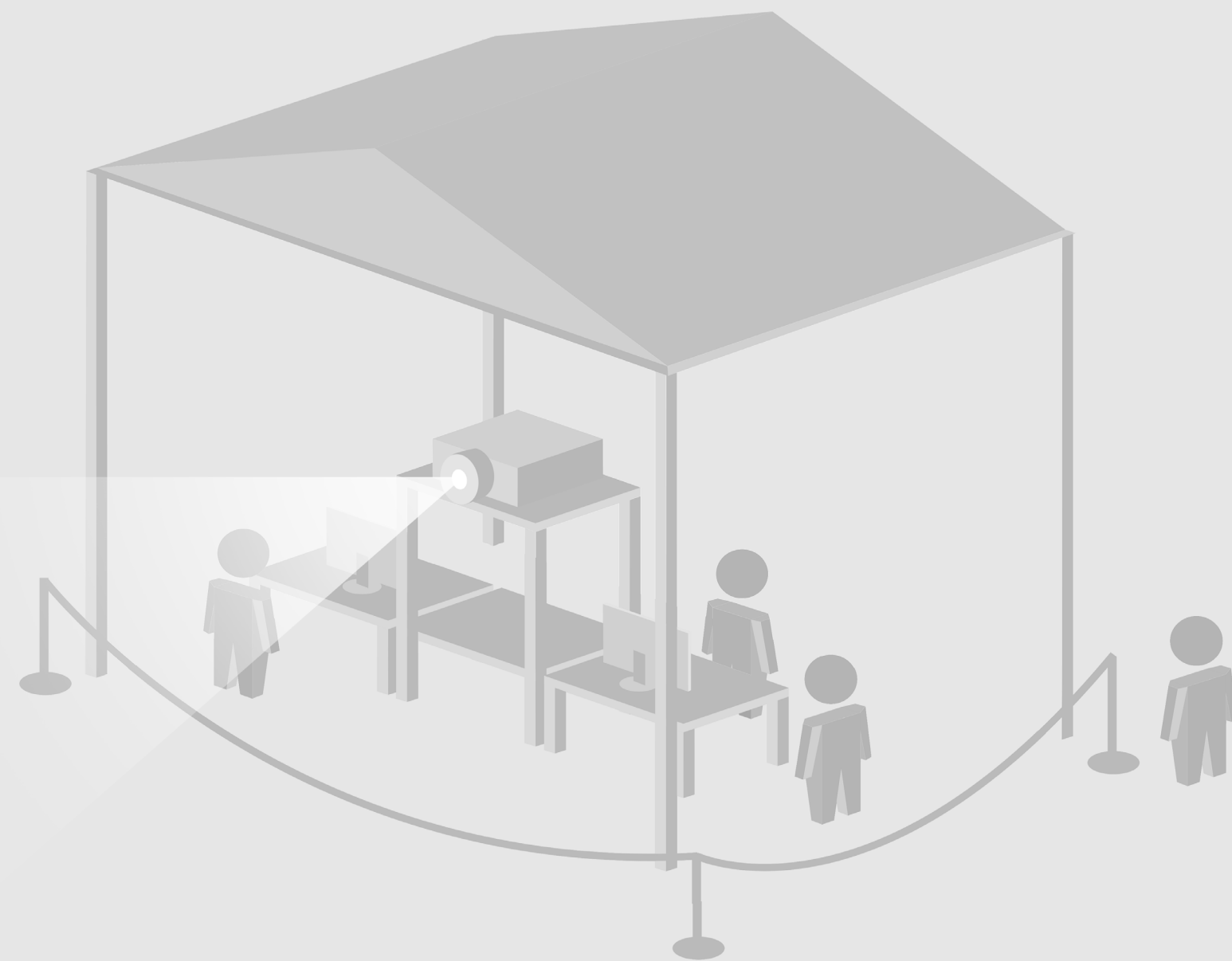
Explore 10 revolutionary facts about LUMITRIX
and start a journey into the future
of digital outdoor projections.



01

Smart Stand-alone Solution

Unlike the traditional projection set-ups
LUMITRIX integrates all required functional components*
in a single device. This makes its use significantly easier.



A traditional outdoor projection set-up with the designers operating projectors in a tent.



***DLP Projector; Media Server; Mapping Designer; GSM Remote Access; Camera; Power Manager**



02

State of the Art Attachment Fixtures

For the most convenient projector handling
and installation versatility available
in the proAV market.



Portable tripod
for short-term events



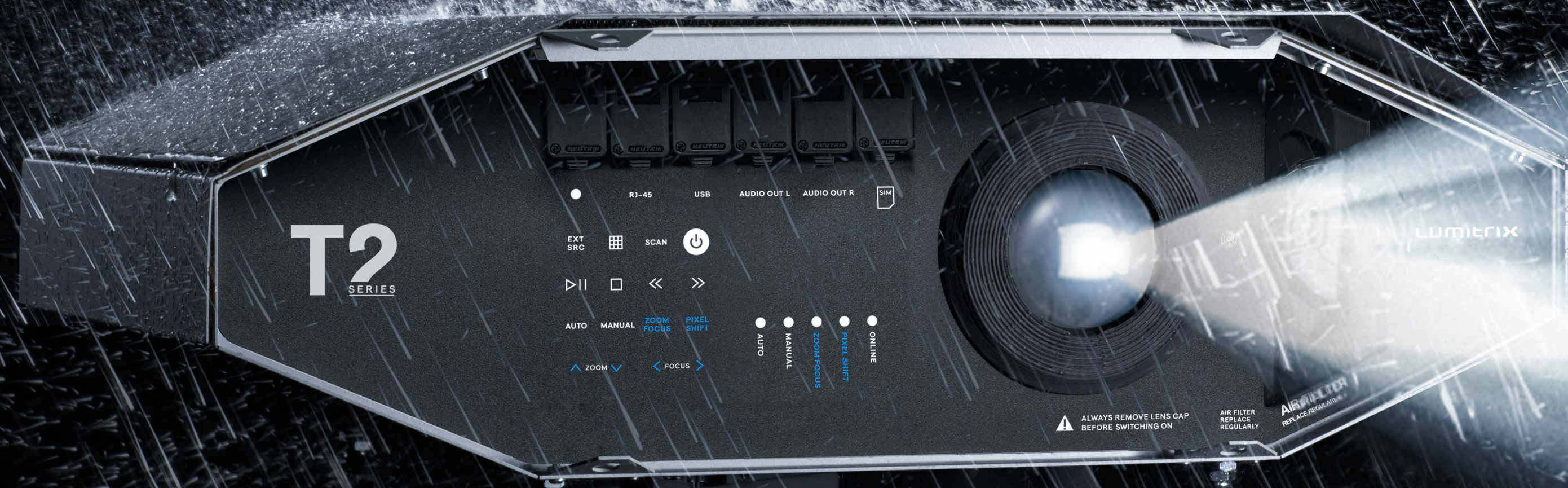
Wall/post fixture
for permanent set-ups



03

Weatherproof Body

with air filter and overvoltage protection
is ready for tough conditions.



Including after-blackout show-restart management for installations
on places with non-reliable power sources.
IP43 certified

04



Lightweight Aluminium Chassis

in compact size.

Because every gram counts
when lifting equipment in heights.

Total weight of a LUMITRIX T2 unit: 21 kg



05

Forget cables

and focus on the performance.

LUMITRIX provides full functionality
with just a single /power input/ connection.



IP65 certified power connector
110 - 230 V / 550 W



Revolutionary Wireless Connectivity

LUMITRIX is equipped with 4G/LTE internet access /IoT/.
Upload media and settings can be managed
from anywhere on the planet.





↑
SIM

NEUTRIK

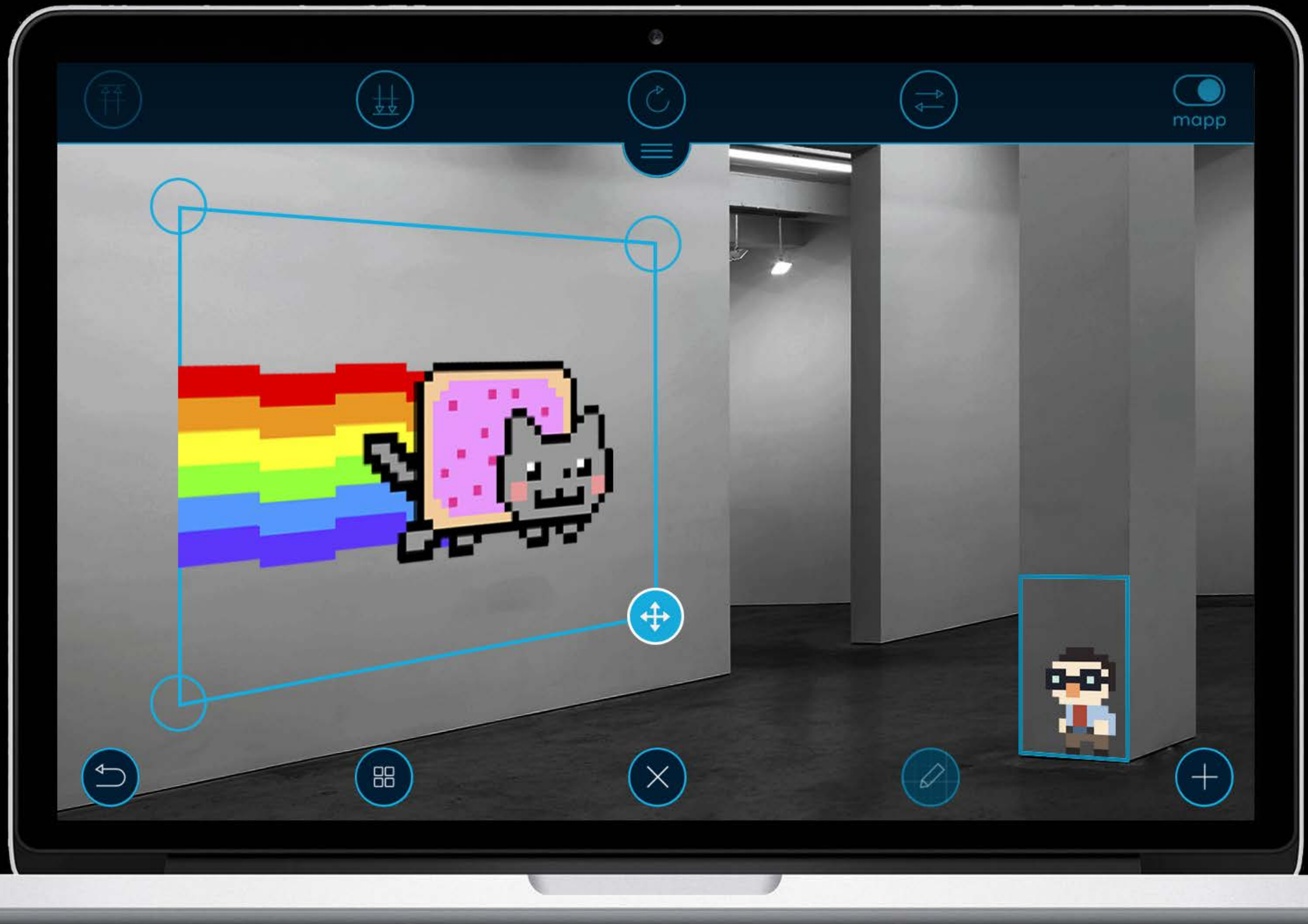
NEUTRIK

07

Projection-mapping App

including library of themes, real-time video editor
and interactive HTML5 apps.





08

Night-vision Camera

with object-scanning function
is integrated in the projection lens
for the perfect image position accuracy.





Scanner tool projecting a set of horizontal and vertical lines to calculate the accurate geometry for precise projection mapping.



09

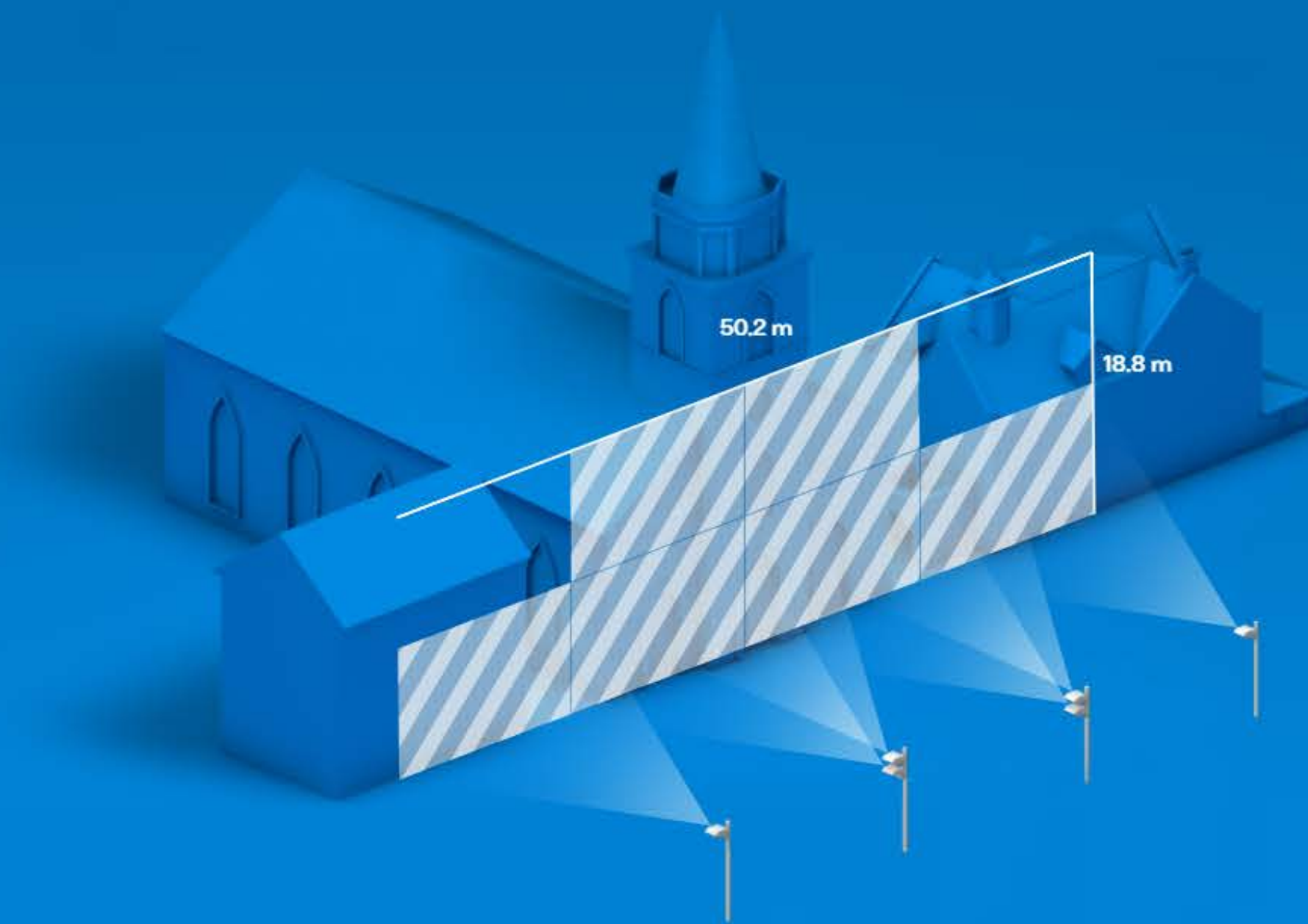
Multi Projector Set-up Tools Included

with soft edge-blender and video-playback synchronization.*

Two or more LUMITRIX projectors can be linked for unlimited** brightness/resolution output.

Try our on-line project configurator

<http://configurator.lumitrix.eu>



*All common video formats supported. The synchronization tool requires projectors to be connected with the LAN cable.

**Maximum of 250 units in single array.

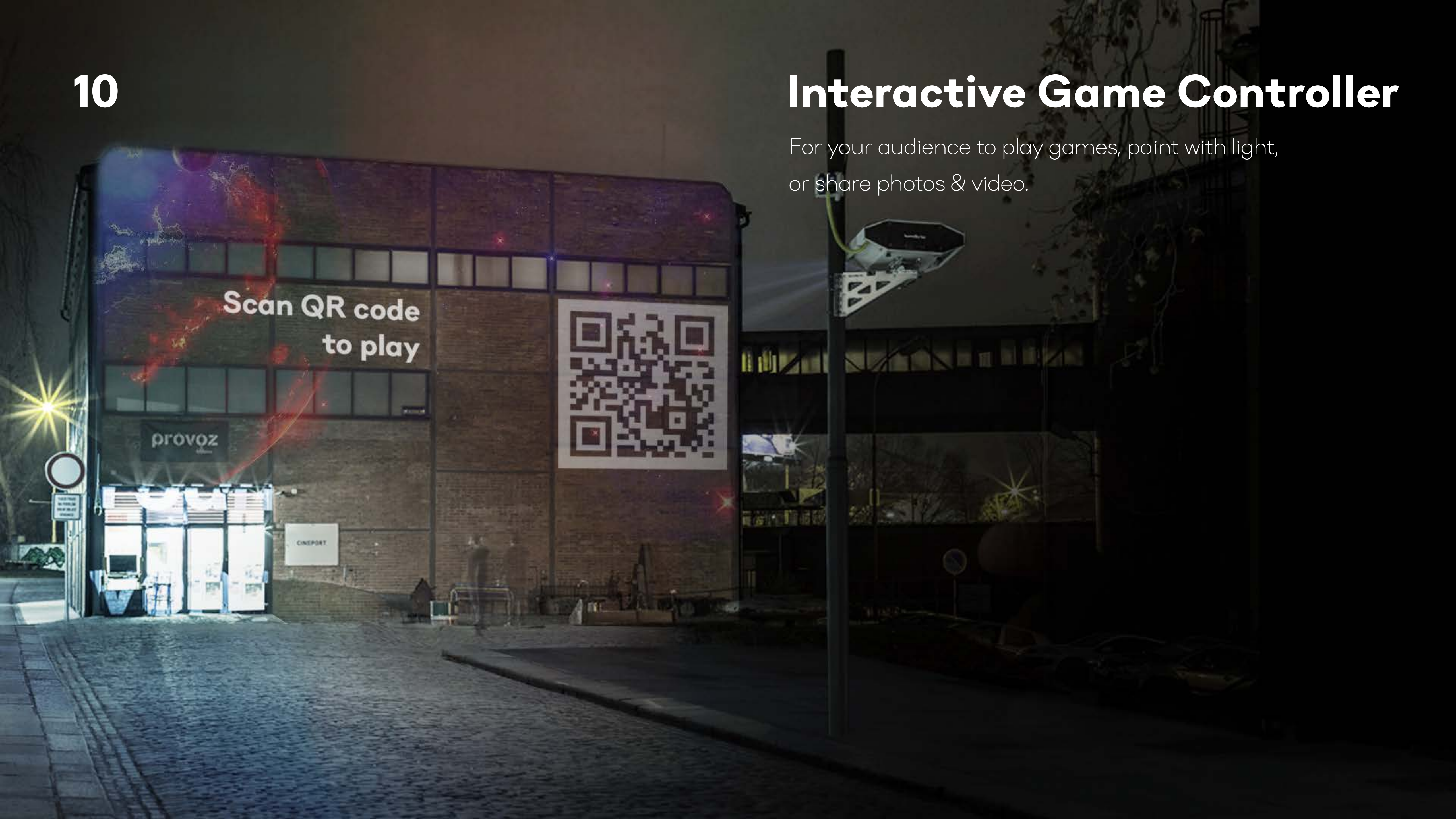


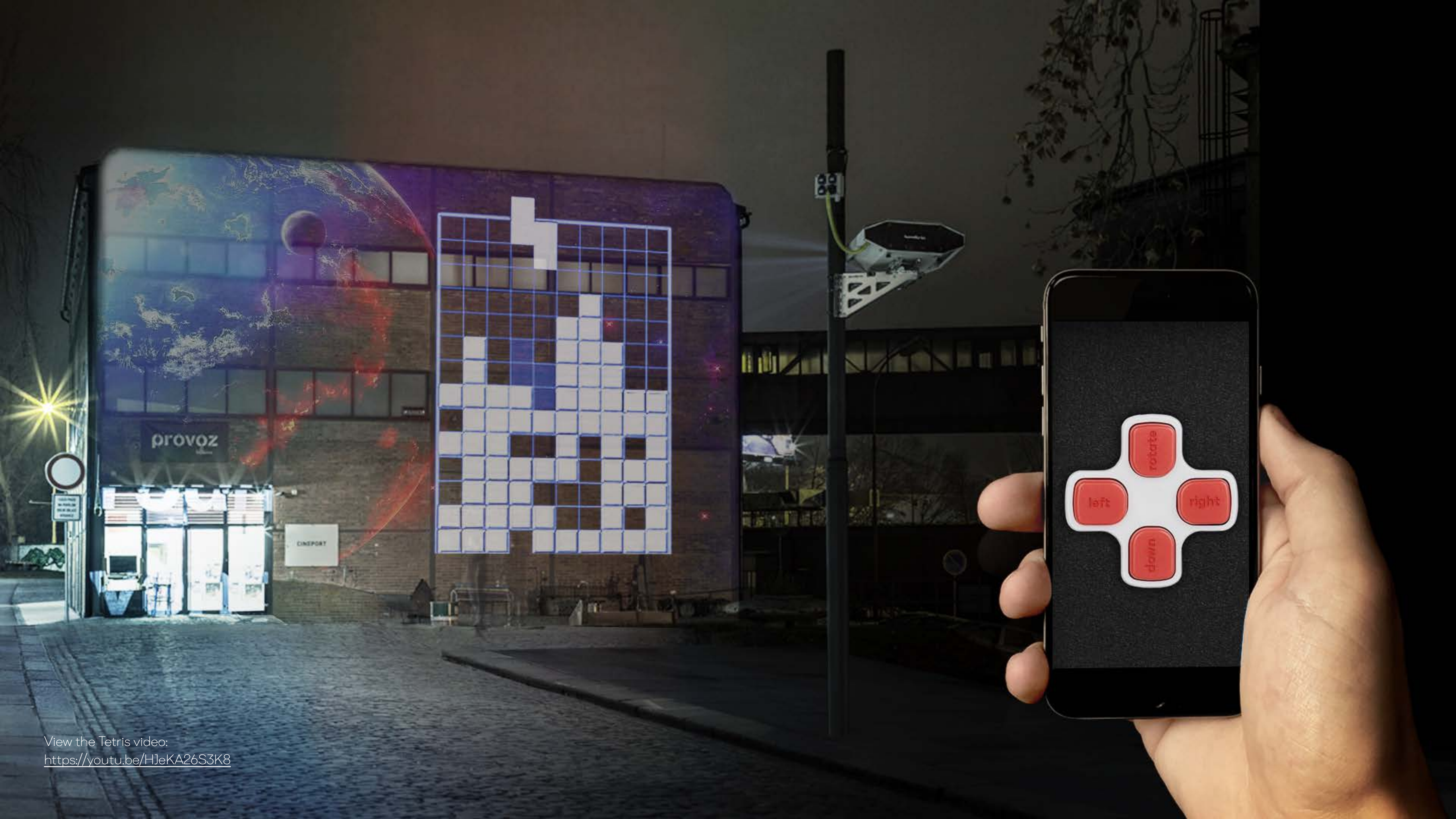
Video synchronization link

10

Interactive Game Controller

For your audience to play games, paint with light, or share photos & video.





View the Tetris video:
<https://youtu.be/HJeKA26S3K8>

© LUMITRIX 2017
info@lumitrix.eu
<http://lumitrix.eu/>

**Isn't
that
revolutionary?**

