

**LMEX**

# Tall Building Projection Mapping Solution / Case Study





## Solution Details

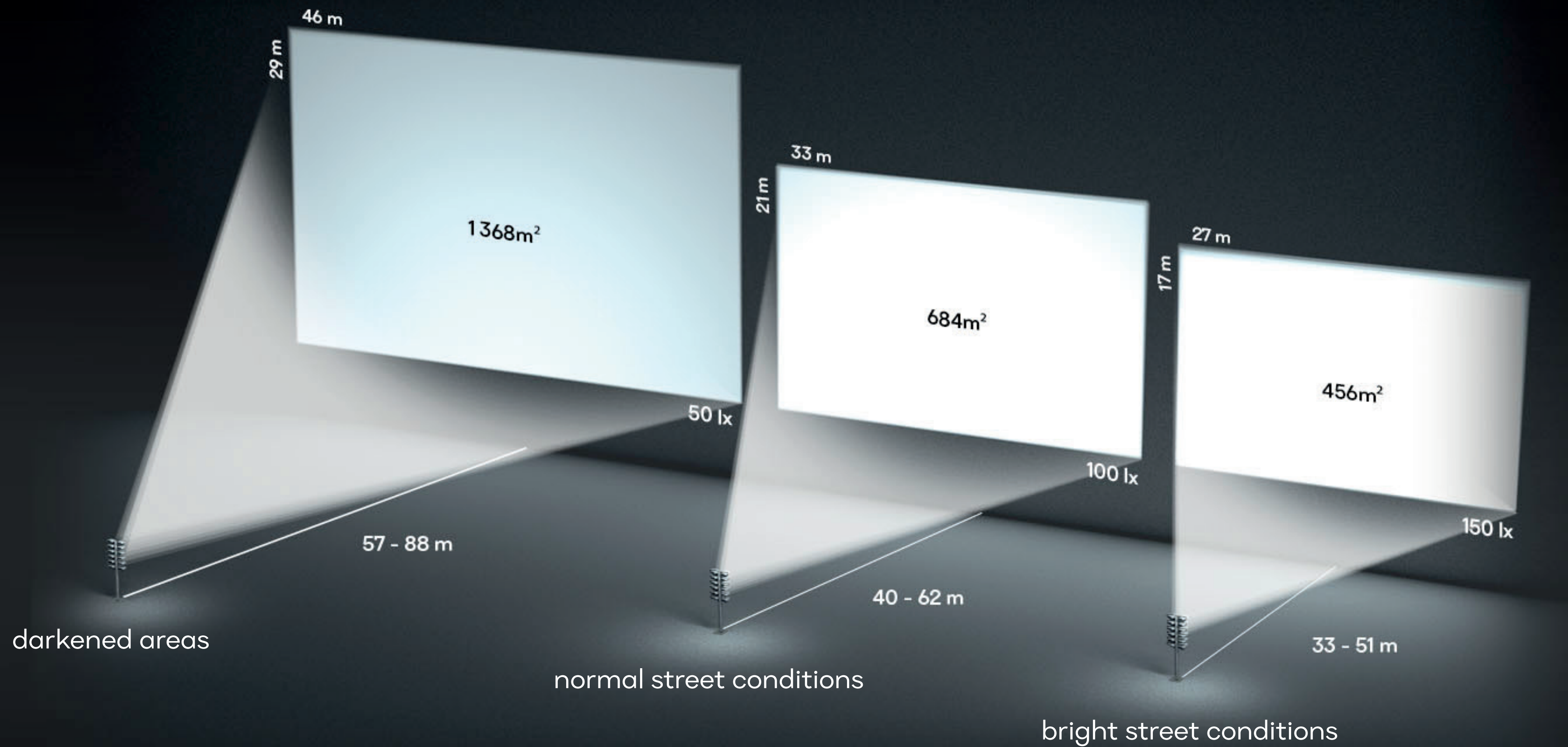
The Tall Building is illuminated using 12 units of LAZR 4G™ outdoor projectors installed on an Urban Mast as shown in the picture. This set-up is remotely managed via a GSM mobile data connection. The user can easily control the show with the Lumiverse app, supplied with the product. This solution is extremely durable and withstands harsh conditions.

Operational Temperature Range	-20 °C to + 45 °C / -4 °F to 113 °F
Weatherproof	IP 43
Power	7.2 kW; 110 – 230V
Light source life	20 000 h laser DLP
Brightness	68 400 ANSI lm
Image Resolution	12 x [ 1920 x 1200 ] px
Throw Ratio	1.2 – 1.9
Standalone & Wireless	4G LTE
User Interface	Lumiverse app
Processor	i5
Media Storage	400 GB
Height	6.1 m
Weight	733 kg

12x LAZR 4G™ Outdoor Video Mapping Projector, certified for permanent outdoor use.  
Made in Europe, Czech Republic





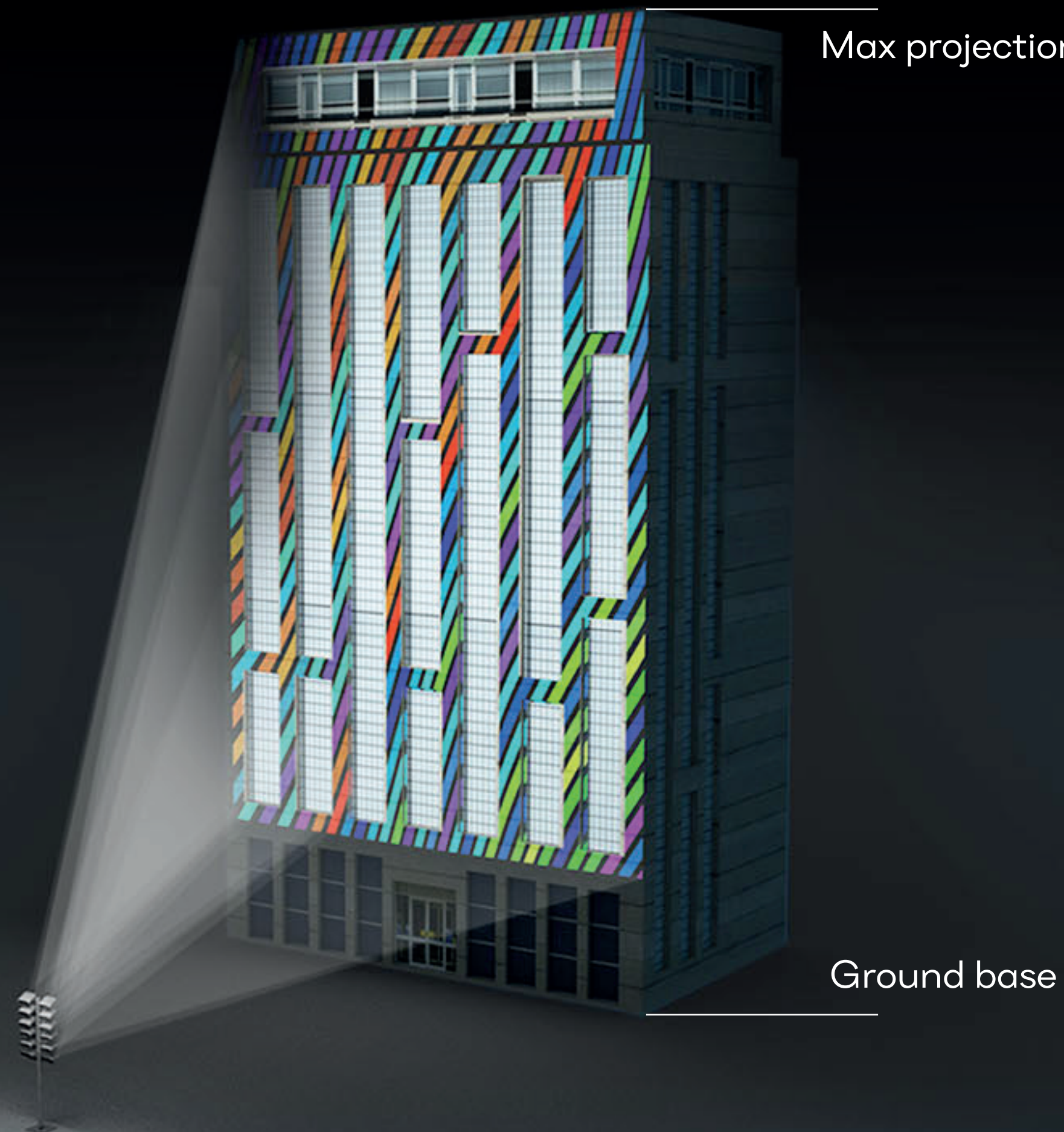


## How big can we get with this 12x projector solution?

With the power of 12 units LAZR 4G™ outdoor video projectors you can illuminate an area of 450 – 1350 square metres. The critical parameter of the image quality is the illuminance expressed in Lux [ lx ; ANSI lm/sqm ]. The larger the screen, the smaller the illuminance, and vice versa. The most commonly used and recommended illuminance value for outdoor projectors is around 100 lx, the lowest viable illuminance is 50 lx in darkened areas.



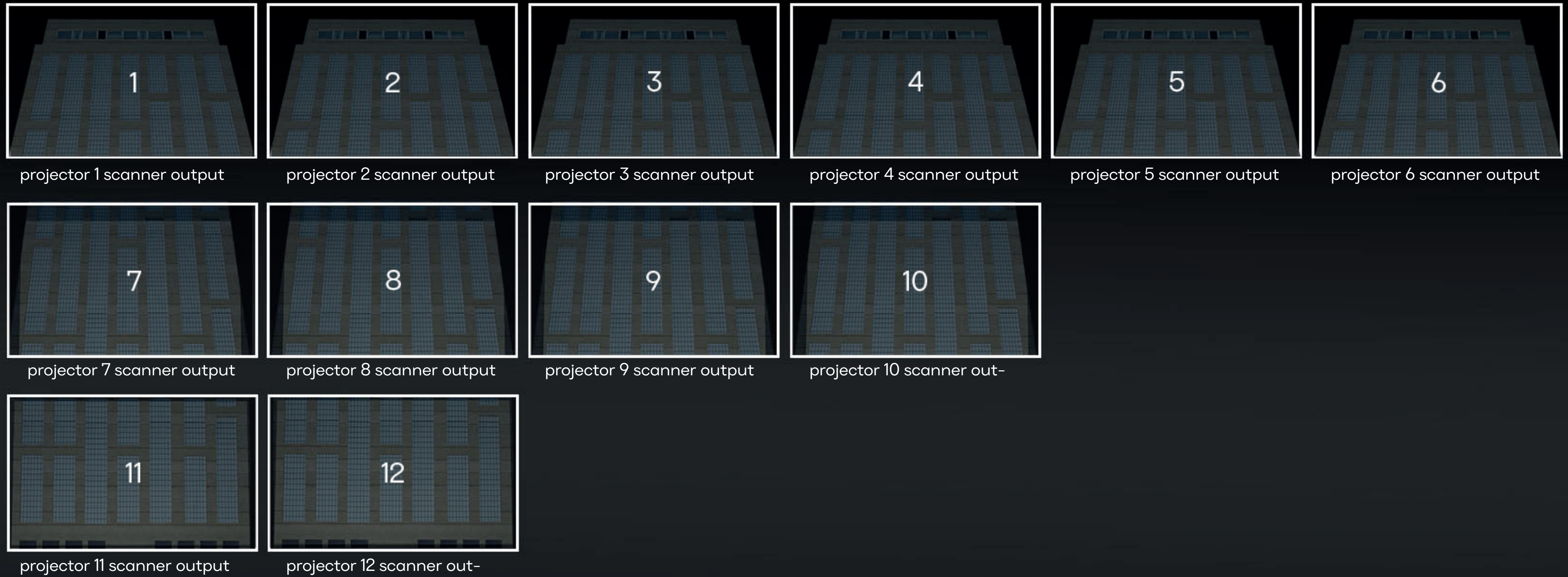
1;2;3;4;5;6
7;8;9;10
11;12



## Variable screen shaping

LM3X unique modular design enables a variety of screen shapes. In this example, we use the edge-blending technique to create an ultra-high screen. In such setup, 12 units of LAZR 4G™ projectors projects image in 1 920 x 3 200 px resolution.





## Pixmap for content creators

LAZR 4G™ projectors are equipped with the Multiscan feature, which enables the creator to weld image from multiple projectors into a seamless screen. The content creator uses the Multiscan pixmap graphic template to develop the video animation for the illuminated object.



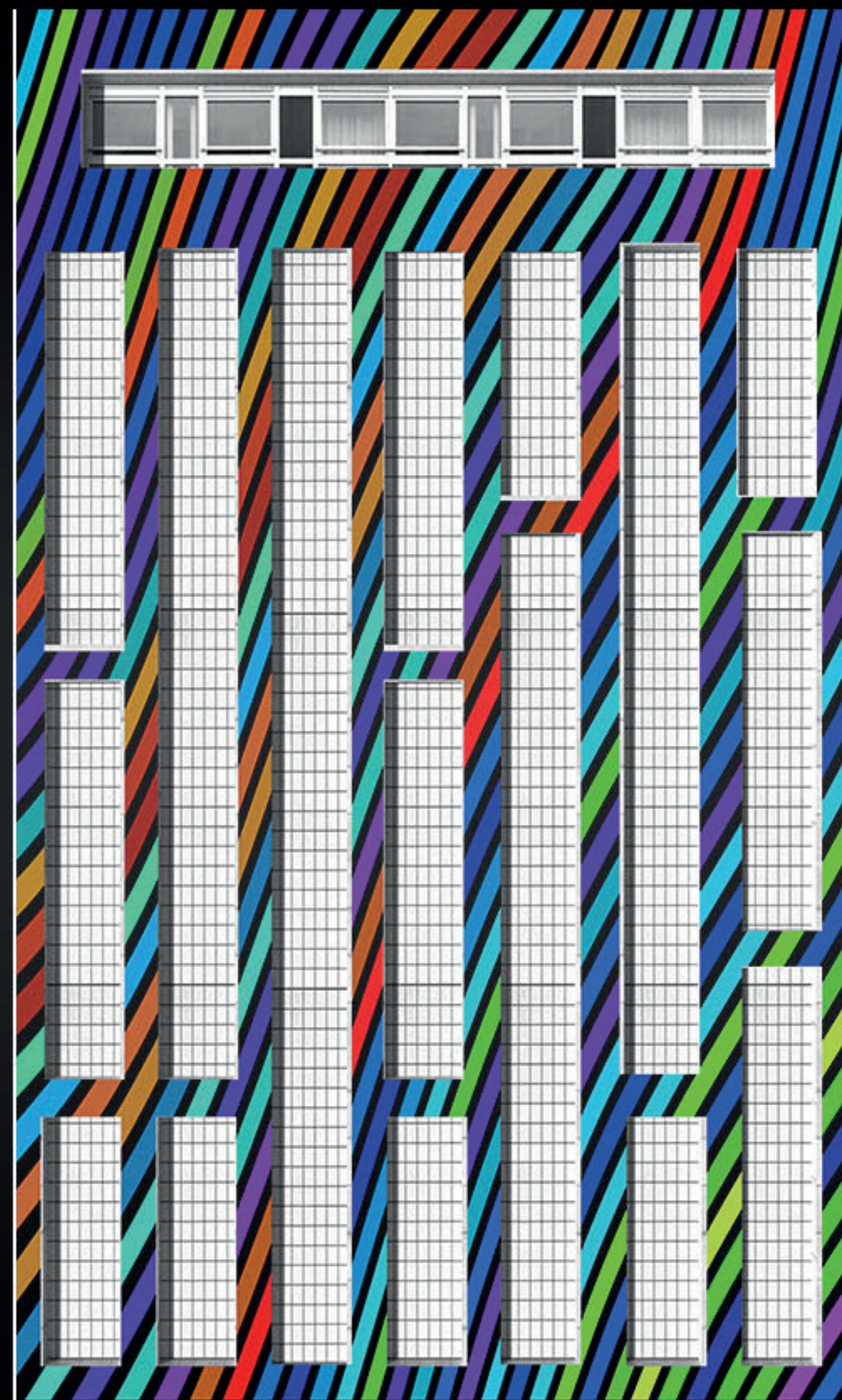
3200px



Multiscan pixelmap output

1920px

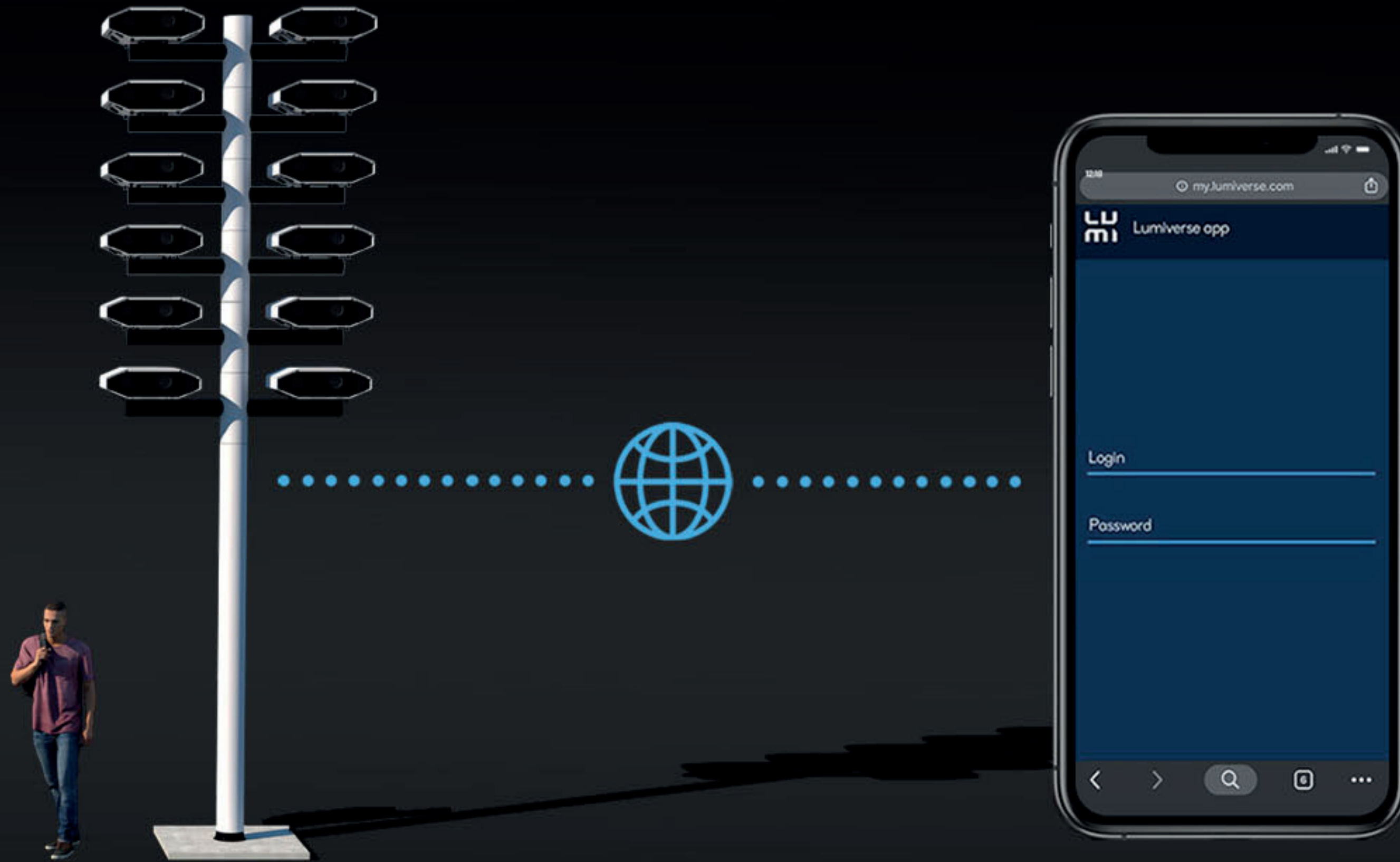
3200px



Video content frame example

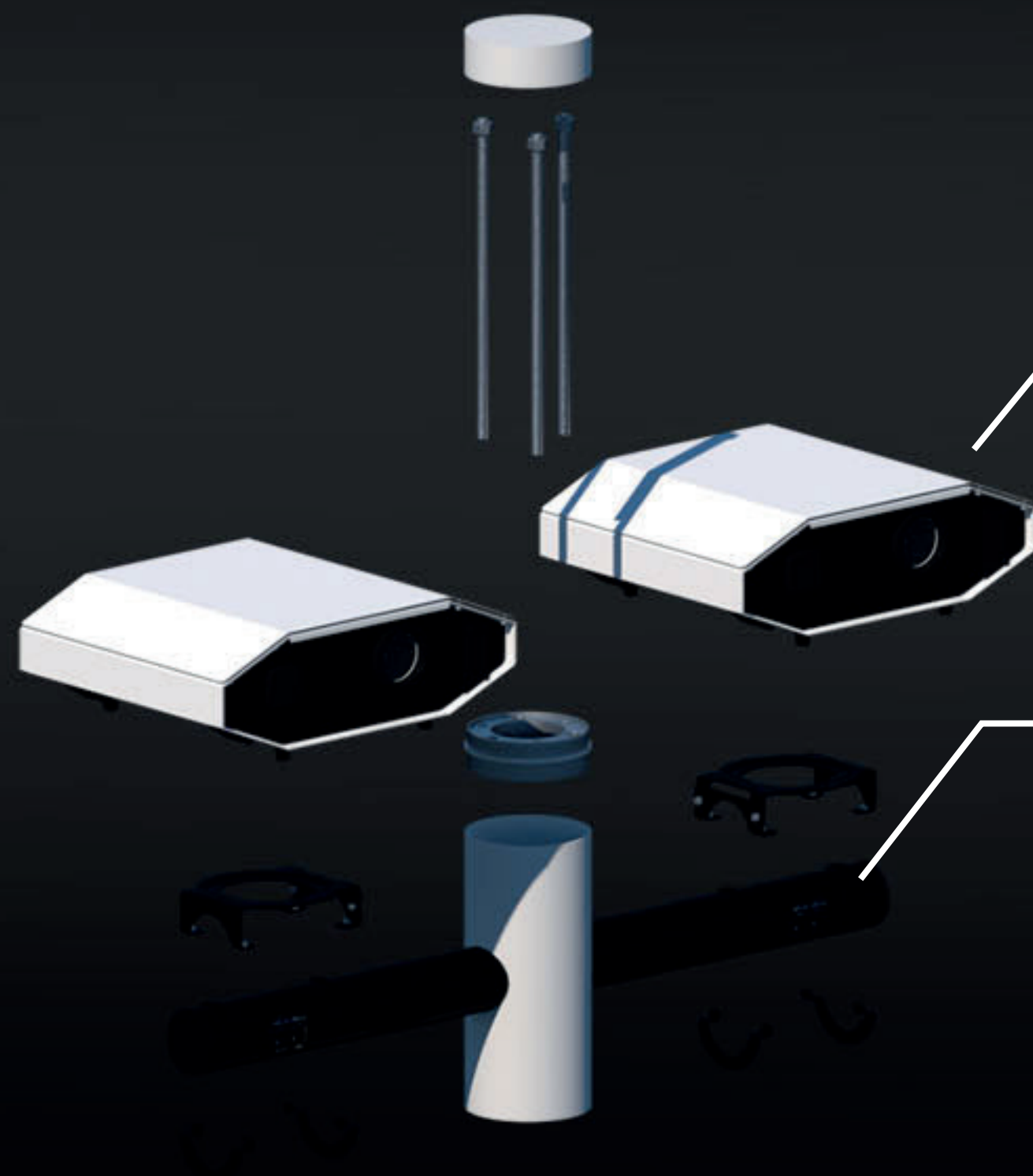
1920px





## Remote control app

You can control all functions of your LAZR 4G™ projectors via the Lumiverse UI app from an unlimited distance. Features Included: Media Player, Projects, Layers, Edge Blending, Object Scanner, Vector Mask, Autoplay Scheduler, Playlists, Mesh & Bezier Warp, Tools such as Color, Paint, Gradient and Complete Remote Management. The end-user may get a simplified UI for selecting Project and managing Autoplay Scheduler only.



## Solution Breakdown

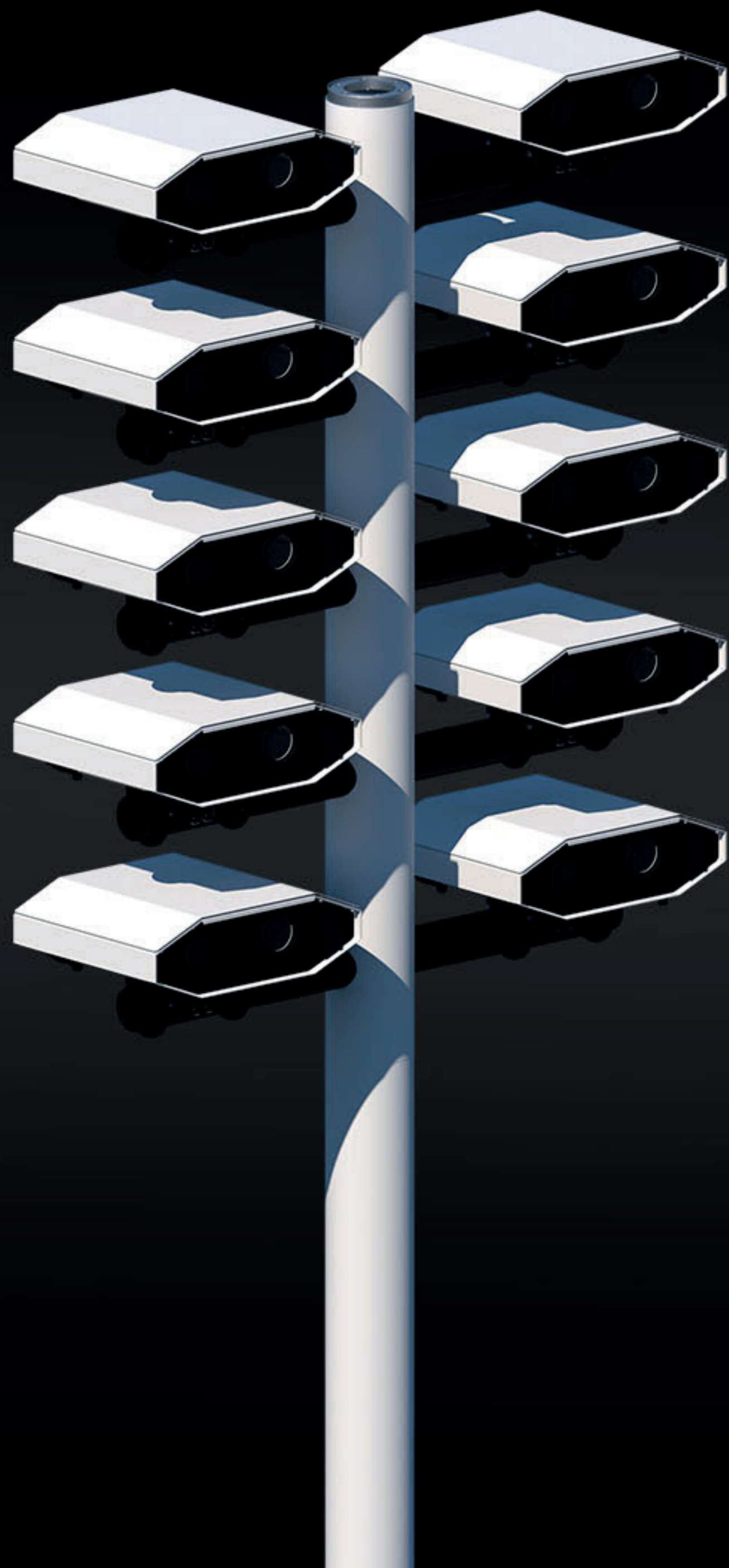
L A Z R 4G™

12x outdoor video mapping projector  
Laser DLP 6000 ANSI lm WUXGA

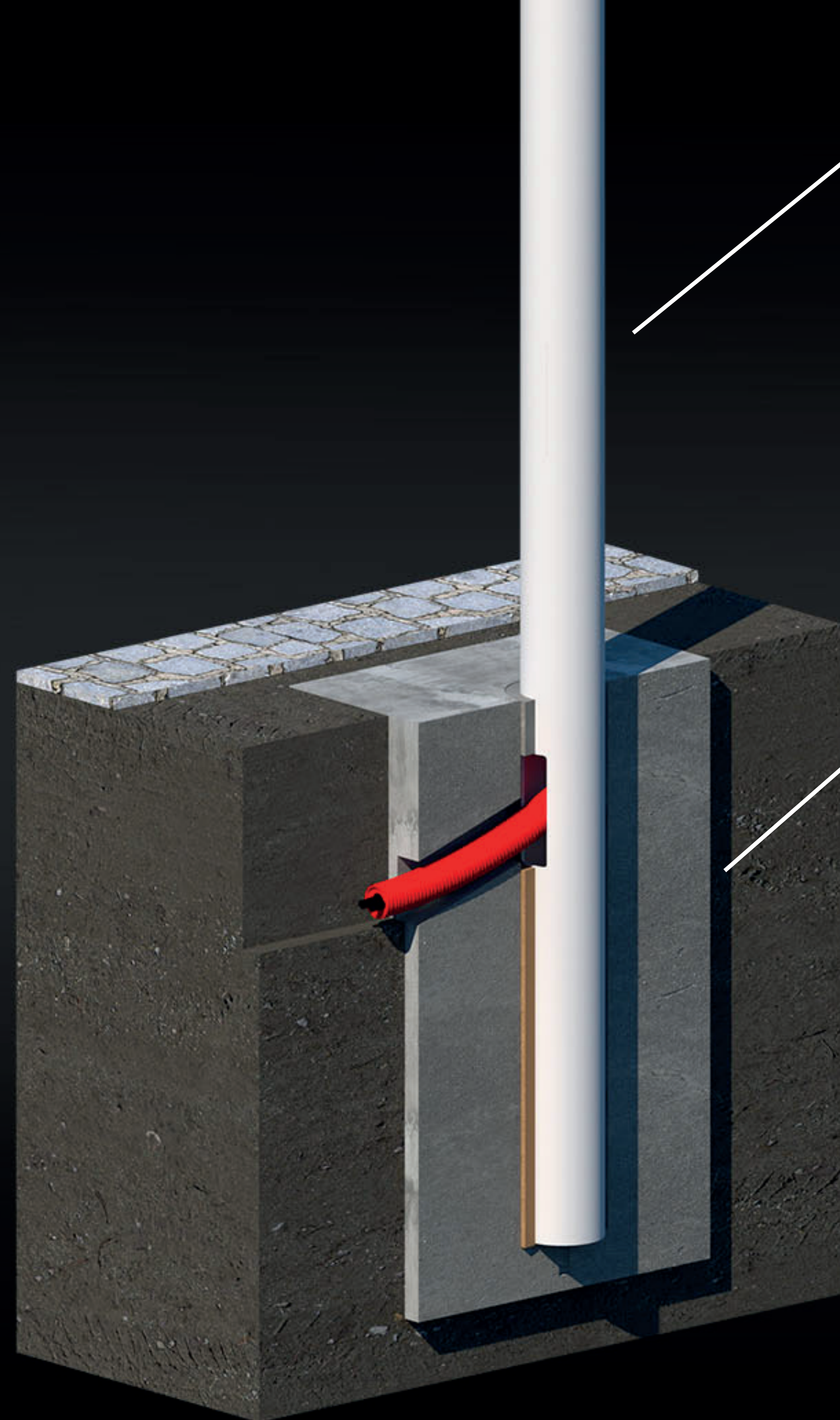
X-part

6x adjustable attachment fixture  
for outdoor projectors









## Main Column B

Vandal-proof steel construction  
Type B can carry up to 12 projectors

## Permanent Base B

Concrete base type B for the Urban Mast  
projector fixture can carry up to 12 projectors.

Cables

Power 7.2 kW, 110 - 230V

LAN, Internet (optional, else 4G/LTE sim card  
required in each projector)





Weather-proof



Control App

**10000hrs**

or 36 months warranty



Remote Technical Support



Installation Assistance

## Solution Cost Breakdown

12x LAZR 4G™ Standalone Outdoor Video Mapping Projector	178 680*
Urban Mast Main Column type B	4 000*
6x Urban Mast X-part	18 000*
Image synchronization router	800*
Shipping estimate	4 000*
Import Tax	–
Installation Assistance & Commissioning Service, optional, man-day based cost estimate	4 500*
<hr/>	
<b>Total</b>	<b>EUR 209 980*</b>

\*Price estimate, media content not included. You may request an accurate price offer for your project at [info@lm3x.com](mailto:info@lm3x.com)  
All rights reserved ©LM3X.com 2021, Lumitrix s.r.o, Czech Republic, European Union, Reg. Nr. CZ29395950

**LM3X**